

Charlotte Harbor Trails and Wayfinding

Tier 2

Quality of Life

Dept. & Contact: **Charlotte Harbor Community Redevelopment Agency — Debrah Forester, Redevelopment Manager, Debrah.Forester@CharlotteFL.com**

Area: **County-Wide** Location: **Charlotte Harbor Community Redevelopment Area**

Need:

The Charlotte Harbor Community Redevelopment Plan identifies a vision that will provide safe pedestrian/bicycle access to both sides of U.S. 41 and encourage neighborhood business development in the historic neighborhood and promote access to Bayshore Live Oak Park. Currently there is limited visible access to the area from U.S. 41.

Purpose:

To improve access to Bayshore Live Oak Park and improve pedestrian connections within the area and the sidewalk master plan. Research shows that amenities, such as walking trails and bike paths, lead to increased physical activity and improved health. A visible gateway into the neighborhood will help to support business opportunities in the historic neighborhood area.

Objectives:

Install sidewalks, streetlighting, signage and landscaping on streets that provide direct access from U.S. 41 to Bayshore Road and Bayshore Live Oak Park.

PROJECT COST PRIOR FUNDING:	\$60,000
PROJECT COST PRIOR FROM SALES TAX:	NONE
TOTAL PROJECT COST:	\$1,060,000
PROJECT COST REQUIRED NEW SALES TAX:	\$1,000,000
ANNUAL OPERATING COST:	\$15,210

Will the project impact public health and safety?

Provide recreational opportunities to further promote a healthy life style.

Will the project foster economic development and create long-term jobs?

Improvements to the area will lead to additional private investment.

Will the project result in decreased, increased, or no operation and maintenance (O&M) costs?

Minimal costs associated with routine maintenance of landscaping, sidewalks and streetlighting.

Will sales tax allow for application of grant funds from another entity?

Project is included in the Charlotte County/Punta Gorda Metropolitan Planning Organization's Transportation Alternatives Program Local Projects and is ranked number 3.

Will the project enable furtherance of phased projects from 2008 sales tax extension?

Sidewalk project. One side of Bayshore Road was funded through the sales tax.

Is this a joint project with another entity?

Charlotte Harbor Community Redevelopment Agency

Will the project meet a community obligation to serve a special needs segment of the County's population, such as: low-income, aged, or minorities?

Sidewalks provide an alternative mode of transportation that is free and safe for all residents and visitors. Providing a link to Bayshore Park and commercial properties in the Community improves access to both commercial and recreational opportunities.

Project to be funded by the 1% Local Option Sales Tax Extension if passed by the voters of Charlotte County

Is the project included Master Plan and/or Comprehensive Plan?

The Charlotte Harbor Community Redevelopment Plan includes a goal to implement a master sidewalk plan and to redevelop the community as a pedestrian-friendly environment. The CRA Plan is referenced in the Comprehensive Plan.

Will the project impact environmental quality of the County?

Less cars on the road will reduce car emissions and improve air quality for future generations.

Percentage of population served

Bayshore Live Oak Park is enjoyed by the entire community, providing free access to Charlotte Harbor.

Will the project improve quality of life in Charlotte County?

Improves safety and improves pedestrian and bicycle connections to commercial district and recreational opportunities.

Is the project state or federally mandated?

No.



Land Information
Section

CHARLOTTE COUNTY

Sales Tax Projects - Charlotte Harbor Trails and Wayfinding (Tier 2)



Stateplane Projection
Datum: NAD83
Units: Feet

Source: Community Development,
SWFWMD

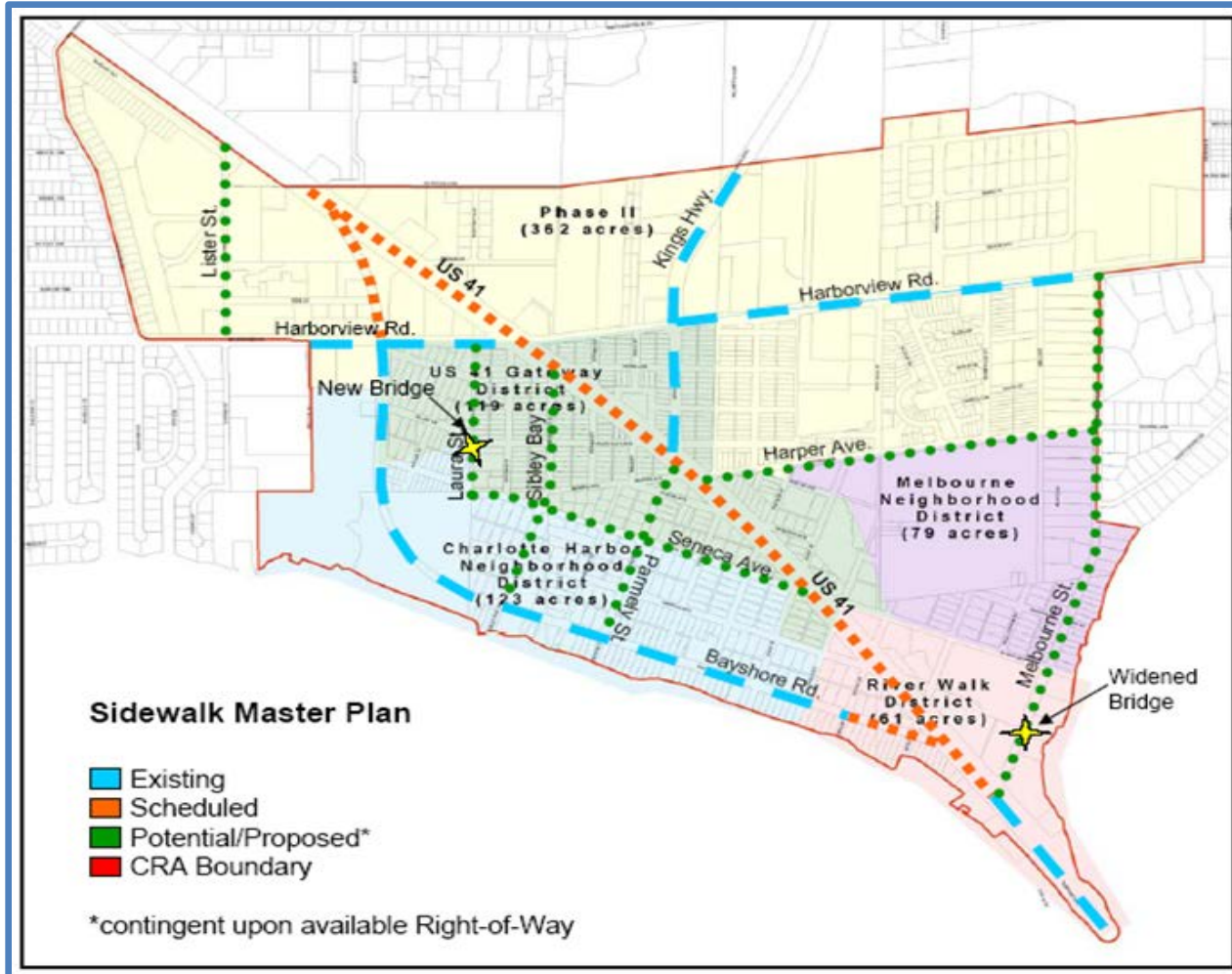
Metadata available upon request



0 250 500 1,000
Feet



Toward Walkable Places: Charlotte Harbor



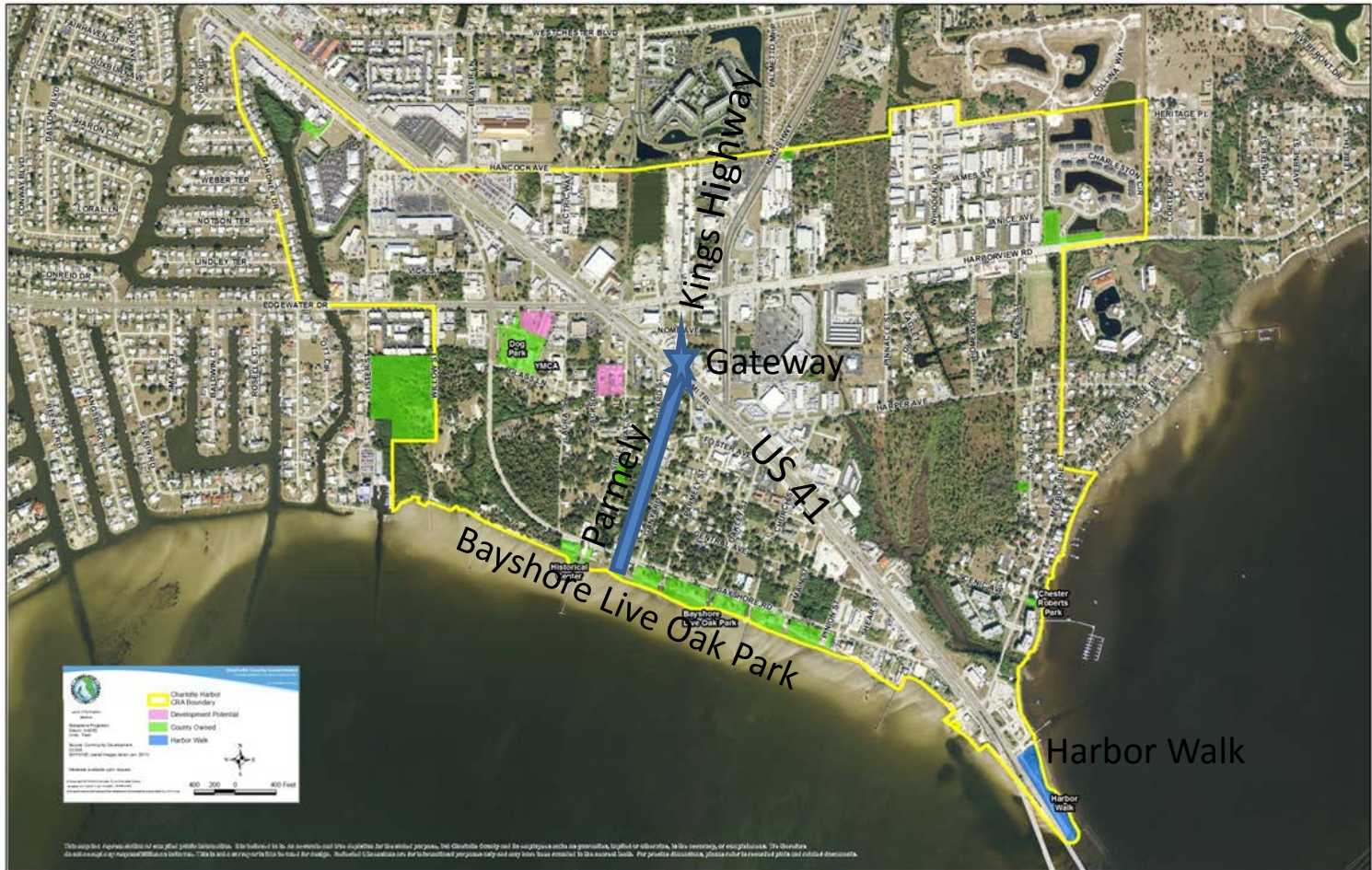
Trail Locations:

- Parmely Street
- Sibley Bay
- Bayshore Road
- Lister Street
- Seneca Avenue
- Melbourne Street
- Harper Avenue



Trails and Wayfinding

Phase I – Parmely Street



This map is for informational purposes only and does not constitute a contract. It is intended to be used as a guide for general information only. The Charlotte County Board of Commissioners is not responsible for any errors or omissions in this map. The Board of Commissioners is not responsible for any errors or omissions in this map. The Board of Commissioners is not responsible for any errors or omissions in this map.

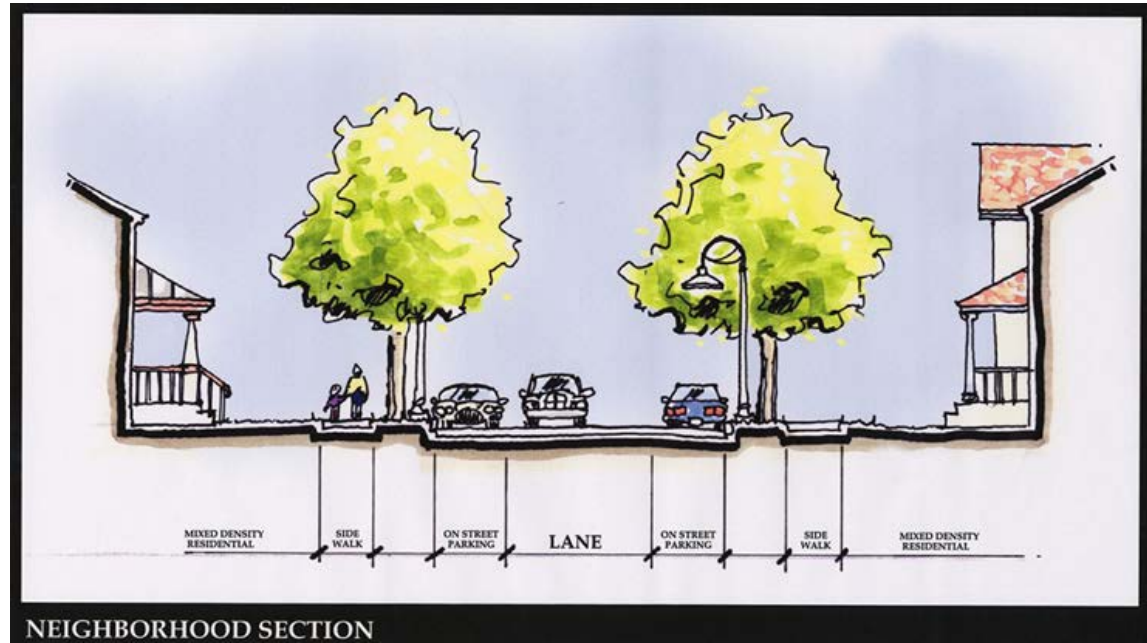


Toward Walkable Places: Charlotte Harbor

Current Conditions



Vision



Components:

- Sidewalks/trails
- Decorative Streetlights
- Banners/Signage
- Crosswalks
- Landscaping