

Sailing Center at Port Charlotte Beach

Tier 2

Quality of Life

Dept. & Contact: **Community Services — Tommy Scott, Director of Community Services,**
Tommy.Scott@CharlotteFL.com

Area: **Mid** Location: **4500 Harbor Boulevard, Port Charlotte**

Need:

The Sailing Center will provide sailing education to youth and families, and promote local sailing enthusiast and tourists. The facility will also provide a much needed anchor location for several sailing specific special events like the Charlotte Harbor Regatta.

Purpose:

Provide a permanent location to provide sailing education for the public and support sailing related activities and events to Charlotte County.

Objectives:

Build 3,000 sq ft building with a large meeting room for educational programs and storage for vessels and event programs supplies.

PROJECT COST PRIOR FUNDING:	NONE
PROJECT COST PRIOR FROM SALES TAX:	NONE
TOTAL PROJECT COST:	\$918,500
PROJECT COST REQUIRED NEW SALES TAX:	\$918,500
ANNUAL OPERATING COST:	\$30,455

Will the project impact public health and safety?

The addition of an educational sailing center will help to ensure boaters and sailing enthusiasts are properly trained.

Will the project foster economic development and create long-term jobs?

The sailing center will provide sailing enthusiasts with a central hub, and continue to foster Charlotte Harbor as a sailing destination for tourists. This facility will be the home for a myriad of special events including the Charlotte Harbor Regatta.

Will the project result in decreased, increased, or no operation and maintenance (O&M) costs?

Minimal increase in O&M through the development of partnerships with local not for profits organizations.

Will sales tax allow for application of grant funds from another entity?

Additional funds are potentially available from the Boater Improvement Fund (BIF), West Coast Inland Navigational District (WCIND) and matching funds from Florida Recreation Development Assistance Program (FRDAP).

Will the project enable furtherance of phased projects from 2008 sales tax extension?

The proposed project would be located at the Port Charlotte Beach Park and would further the development of the sales tax projects already completed there.

Is this a joint project with another entity?

Yes, Charlotte Harbor Sailing Center Inc., Charlotte Harbor Regatta, Charlotte Harbor Yacht Club and Punta Gorda Isles Yacht Club.

Will the project meet a community obligation to serve a special needs segment of the County's population, such as: low-income, aged, or minorities?

Project to be funded by the 1% Local Option Sales Tax Extension if passed by the voters of Charlotte County

The sailing center will provide sailing opportunities for all segments of the community. Proposed programming would include low income and citizens with disabilities.

Is the project included Master Plan and/or Comprehensive Plan?

The department is currently developing its park master plan and it will be incorporated into the Comprehensive Plan. The additional amenities will assist the County in meeting the established level of service for Parks and Recreation called for in the Comprehensive Plan.

Will the project impact environmental quality of the County?

There will be minimal environmental impact, if any.

Percentage of population served

This project would serve approximately 25% of the county's population.

Will the project improve quality of life in Charlotte County?

The addition of the sailing center will provide additional recreational opportunities for sailing enthusiasts, as well as opportunities for spectating of competitive sailing at special events and instructional sailing for beginners.

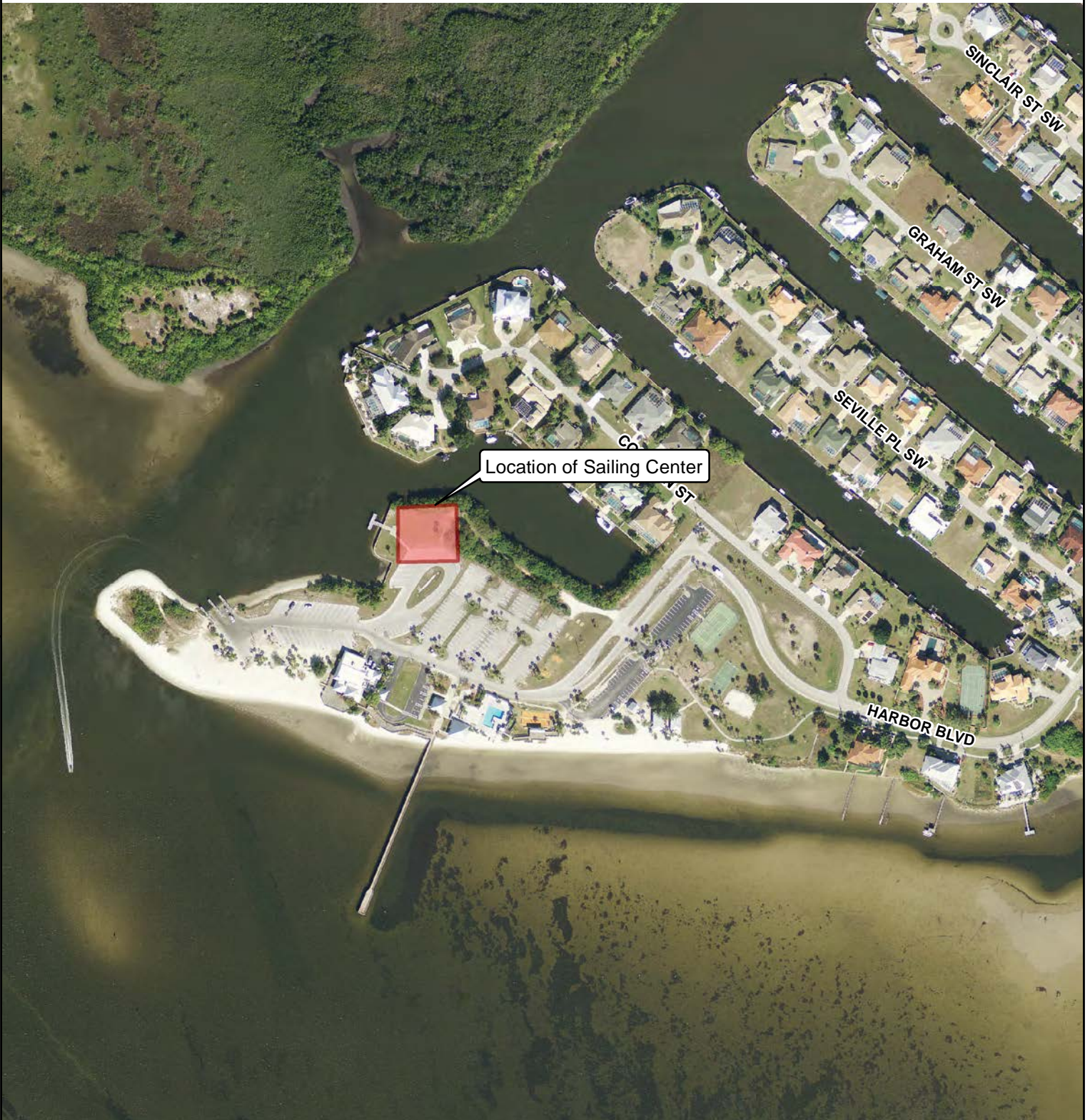
Is the project state or federally mandated?

No.



CHARLOTTE COUNTY

Sales Tax Projects - Sailing Center at Port Charlotte Beach (Tier 2)



Location of Sailing Center

Stateplane Projection
Datum: NAD83
Units: Feet
Source: Community Development, SWFWMD
Metadata available upon request



0 75 150 300 Feet